

Splice patch wallbox

for 72 splices and
48 LC/24 SC ports



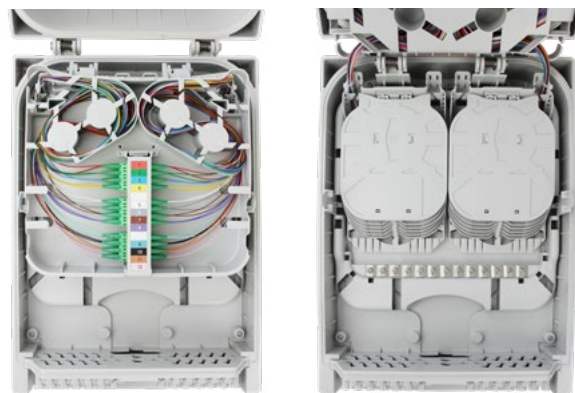
- > Wallbox for indoor network termination as well as the connection of single dwelling units
- > **3-part modular design**, consisting of housing, fiber module and cover, which can be installed independently of each other
- > **Integrated management** for fibers and wires
- > Fiber module with pivoting patch panel, pull-out adapter holder, splice tray system, fiber management and cable feeds/outlets
- > Prepared for a modern identification and **access control system** based on NFC standard RFID tag acc. to ISO-IEC 14443A
- > Suitable for splitter integration

Splice patch wallbox XL

for 144 splices and
72 LC/36 SC ports



- > FTTH wall box for indoor and outdoor applications, used for network termination and in-house distribution.
- > **2-part modular design**, consisting of housing with foldable cover and removeable fiber module including cable feed and clamp
- > **Fiber module with cable management** at the hinged patch area and underneath for fiber routing, splicing and loop function
- > **Handling separation** through parallel construction enabling network layers to have distinct areas in the wall box
- > Locking system
- > Suitable for splitter integration



Increase your network's WAVEPACE!

Innovative, cost-optimised and highly flexible FTTH solutions for every network level.

Your WAVEPACE® sales partner:



braun teleCom GmbH

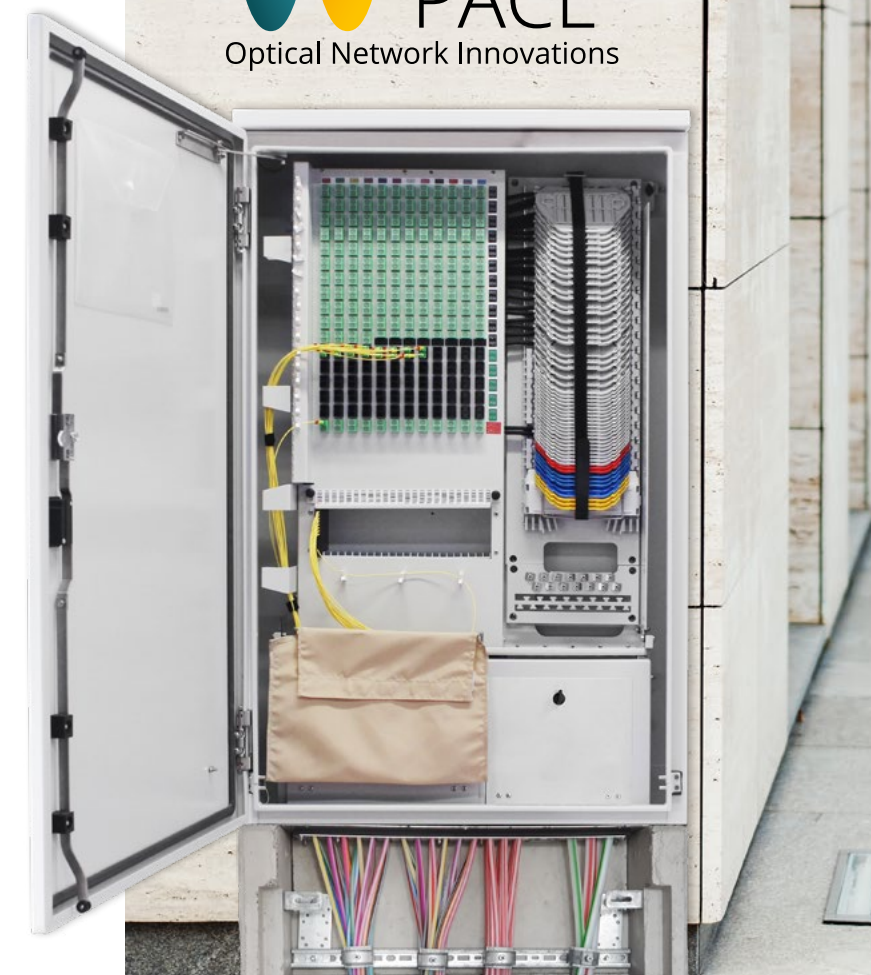
Merkurstr. 3 c
30419 Hanover, Germany

Phone +49 511 757086
info.de.hannover@netceed.com
www.netceed.com

Please find further information about WAVEPACE® products at www.wavepace.com

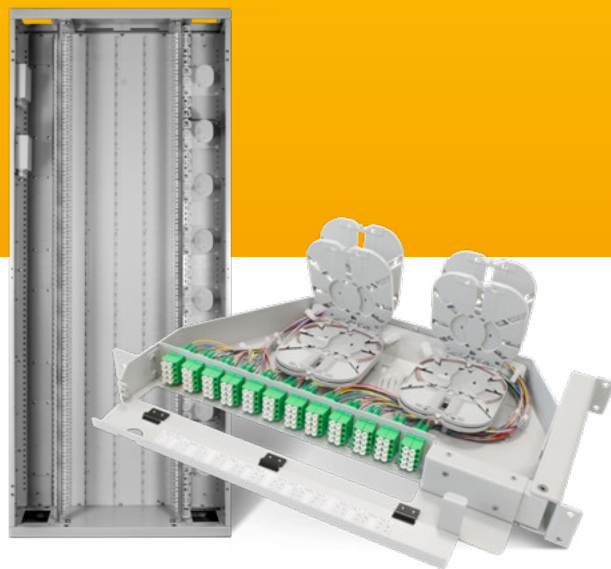


WAVEPACE® Product Overview



ODF system & 19" panels

System solution for easy front access



Optical Distribution Frame

- > **Stable distribution cabinet** as a complete unit for termination and distribution of fiber optic technology
- > Designed for **pure front access**
- > **Optimized 19" front and rear mounting rails** for installing the panel system solutions for free access
- > Easy to use, logical cable routing and support
- > Guides for protective tubes on the rear of the cabinet to each rack unit.
- > **Ventilation option** for accommodating **active 19" components**

Easy-access splice panels

- > 19" panel with **unique pivot function**
- > **Pre-assembled** with up to 96 ports and pigtails according DIN color code, stored in splice trays, **ready for connection**
- > Patch field with **foldable front cover** for cable protection and documentation
- > **Integrated management** for fibers and wires
- > Up to 8 hinged splice trays with a maximum capacity of 12 fibers with a 90° hinge angle for maximum visibility and maintenance

Splice splitter patch outdoor cabinet

for point to multipoint networks



- > Passive **ready-to-connect** outside plant cabinet for distribution of fiber optic connections via splitters to the subscriber
- > **Robust, application-optimized** cabinet made of powder-coated stainless steel
- > **Small cabinet depth** 20 cm
- > **High capacity:** Up to 60 cable feed options
- > **Pre-assembled** with for example 256 SC/APC adapters and pigtails

Accessories (extract)

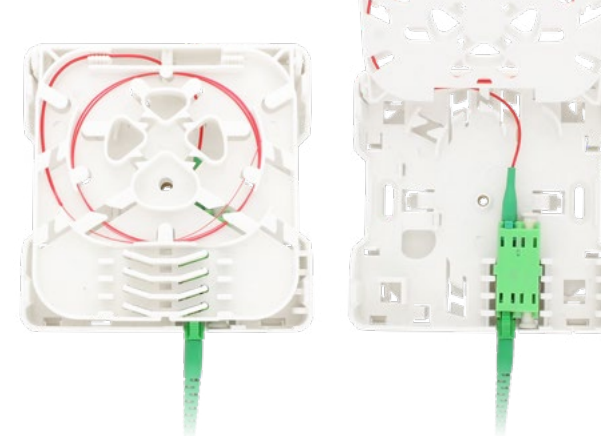
Item	Description
Splitter-Module 1:8	PLC-Splitter box, type SC/APC 1:8
Splitter-Module 1:16	PLC-Splitter box, type SC/APC 1:16
Splitter-Module 1:32	PLC-Splitter box, type SC/APC 1:32
Fiber-Cabinet-Base	Metal base with inspection panel
Fiber-Cabinet-Concrete-Plinth	Ground plinth, lightweight concrete

Wall Outlet FWO-X1

for the FTTH subscriber connection

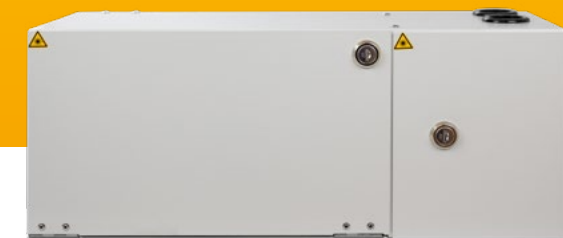


- > Multifunctional FTTH wall outlet with 4 ports LC or 2 ports SC for fiber connection
- > **Compact dimensions**, only 80 x 80 x 29 mm
- > Installation options for **all applications** (cavity wall box, wall mounting, DIN rails and as click-on for DIY installation)
- > Hinged splice tray with **universal splice protector holder** (crimp, heat shrink and Micro Smouv/Mini HS)
- > **Available versions:** Empty housing, pre-terminated with adapters and/or pigtails and with in-house "pizza box" style cable on roll-off carton



2-door wallbox

metal wallbox with two separate access areas



- > Compact metal wallbox,
- > 2 doors with separate locks, **suitable for Open Access rollouts**
- > Capacity for 48 LC/APC ports, or as HD version 64 ports with quad adapters and 48 ports SC with simplex adapters
- > 6 foldable splice trays for crimp splice protection, to **splice up to 72 fibers**
- > Completely pre-assembled versions available for **quick on-site use**
- > Boxes can be mounted directly on top of each other for cascading, directly or on a joint support rail
- > Suitable for splitter integration

